



Title Plan - LT 567585

Survey Number LT 567585
Surveyor Reference 1813 Pokeno Stage 13A1 and A2
Surveyor Campbell Lloyd Harvey
Survey Firm Civilplan Consultants Limited
Surveyor Declaration

Survey Details

Dataset Description Lots 1-4, 10, 13,15, 559-563, 691-701, 710-749 and 1000 being a Subdivision of Lot 1 DP 321866, Lot 1 DP 540985 and Lot 1016 DP 558987

Status Initiated

Land District North Auckland **Survey Class** Class A

Submitted Date **Survey Approval Date**
Deposit Date

Territorial Authorities

Waikato District

Comprised In

RT 949827
RT 984647
RT 87423

Created Parcels

Parcels	Parcel Intent	Area	RT Reference
Lot 559 Deposited Plan 567585	Fee Simple Title	0.0518 Ha	1017829
Lot 560 Deposited Plan 567585	Fee Simple Title	0.0556 Ha	1017830
Lot 561 Deposited Plan 567585	Fee Simple Title	0.0459 Ha	1017831
Lot 562 Deposited Plan 567585	Fee Simple Title	0.0622 Ha	1017832
Lot 563 Deposited Plan 567585	Fee Simple Title	0.0637 Ha	1017833
Lot 691 Deposited Plan 567585	Fee Simple Title	0.0459 Ha	1017834
Lot 692 Deposited Plan 567585	Fee Simple Title	0.0459 Ha	1017835
Lot 693 Deposited Plan 567585	Fee Simple Title	0.0459 Ha	1017836
Lot 694 Deposited Plan 567585	Fee Simple Title	0.0459 Ha	1017837
Lot 695 Deposited Plan 567585	Fee Simple Title	0.0503 Ha	1017838
Lot 696 Deposited Plan 567585	Fee Simple Title	0.0519 Ha	1017839
Lot 697 Deposited Plan 567585	Fee Simple Title	0.0472 Ha	1017840
Lot 698 Deposited Plan 567585	Fee Simple Title	0.0472 Ha	1017841
Lot 699 Deposited Plan 567585	Fee Simple Title	0.0472 Ha	1017842
Lot 700 Deposited Plan 567585	Fee Simple Title	0.0472 Ha	1017843
Lot 701 Deposited Plan 567585	Fee Simple Title	0.0472 Ha	1017844
Lot 710 Deposited Plan 567585	Fee Simple Title	0.0629 Ha	1017845
Lot 711 Deposited Plan 567585	Fee Simple Title	0.0459 Ha	1017846
Lot 712 Deposited Plan 567585	Fee Simple Title	0.0459 Ha	1017847
Lot 713 Deposited Plan 567585	Fee Simple Title	0.0548 Ha	1017848
Lot 714 Deposited Plan 567585	Fee Simple Title	0.0488 Ha	1017849

Title Plan - LT 567585

Created Parcels

Parcels	Parcel Intent	Area	RT Reference
Lot 715 Deposited Plan 567585	Fee Simple Title	0.0503 Ha	1017850
Lot 716 Deposited Plan 567585	Fee Simple Title	0.0517 Ha	1017851
Lot 717 Deposited Plan 567585	Fee Simple Title	0.0535 Ha	1017852
Lot 718 Deposited Plan 567585	Fee Simple Title	0.0517 Ha	1017853
Lot 719 Deposited Plan 567585	Fee Simple Title	0.0532 Ha	1017854
Lot 720 Deposited Plan 567585	Fee Simple Title	0.0556 Ha	1017855
Lot 721 Deposited Plan 567585	Fee Simple Title	0.0565 Ha	1017856
Lot 722 Deposited Plan 567585	Fee Simple Title	0.0463 Ha	1017857
Lot 723 Deposited Plan 567585	Fee Simple Title	0.0461 Ha	1017858
Lot 724 Deposited Plan 567585	Fee Simple Title	0.0544 Ha	1017859
Lot 725 Deposited Plan 567585	Fee Simple Title	0.0477 Ha	1017860
Lot 726 Deposited Plan 567585	Fee Simple Title	0.0477 Ha	1017861
Lot 727 Deposited Plan 567585	Fee Simple Title	0.0477 Ha	1017862
Lot 728 Deposited Plan 567585	Fee Simple Title	0.0477 Ha	1017863
Lot 729 Deposited Plan 567585	Fee Simple Title	0.0476 Ha	1017864
Lot 730 Deposited Plan 567585	Fee Simple Title	0.0455 Ha	1017866
Lot 731 Deposited Plan 567585	Fee Simple Title	0.0468 Ha	1017867
Lot 732 Deposited Plan 567585	Fee Simple Title	0.0512 Ha	1017868
Lot 733 Deposited Plan 567585	Fee Simple Title	0.0512 Ha	1017869
Lot 734 Deposited Plan 567585	Fee Simple Title	0.0623 Ha	1017870
Lot 735 Deposited Plan 567585	Fee Simple Title	0.0620 Ha	1017871
Lot 736 Deposited Plan 567585	Fee Simple Title	0.0512 Ha	1017872
Lot 737 Deposited Plan 567585	Fee Simple Title	0.0512 Ha	1017873
Lot 738 Deposited Plan 567585	Fee Simple Title	0.0512 Ha	1017874
Lot 739 Deposited Plan 567585	Fee Simple Title	0.0512 Ha	1017875
Lot 740 Deposited Plan 567585	Fee Simple Title	0.0617 Ha	1017876
Lot 741 Deposited Plan 567585	Fee Simple Title	0.0615 Ha	1017877
Lot 742 Deposited Plan 567585	Fee Simple Title	0.0512 Ha	1017878
Lot 743 Deposited Plan 567585	Fee Simple Title	0.0512 Ha	1017879
Lot 744 Deposited Plan 567585	Fee Simple Title	0.0461 Ha	1017880
Lot 745 Deposited Plan 567585	Fee Simple Title	0.0509 Ha	1017881
Lot 746 Deposited Plan 567585	Fee Simple Title	0.0509 Ha	1017882
Lot 747 Deposited Plan 567585	Fee Simple Title	0.0509 Ha	1017883
Lot 748 Deposited Plan 567585	Fee Simple Title	0.0509 Ha	1017884
Lot 749 Deposited Plan 567585	Fee Simple Title	0.0512 Ha	1017885
Lot 1 Deposited Plan 567585	Fee Simple Title	0.0238 Ha	Multiple
Lot 2 Deposited Plan 567585	Fee Simple Title	0.0344 Ha	Multiple
Lot 3 Deposited Plan 567585	Fee Simple Title	0.0294 Ha	Multiple
Lot 4 Deposited Plan 567585	Fee Simple Title	0.0294 Ha	Multiple
Lot 10 Deposited Plan 567585	Vesting on Deposit for Local Purpose Reserve	0.5937 Ha	1017886
Lot 13 Deposited Plan 567585	Vesting on Deposit for Road	0.6019 Ha	



Title Plan - LT 567585

Created Parcels

Parcels	Parcel Intent	Area	RT Reference
Lot 15 Deposited Plan 567585	Vesting on Deposit for Road	0.3984 Ha	
Lot 1000 Deposited Plan 567585	Fee Simple Title	10.7370 Ha	1017887
Area A Deposited Plan 567585	Easement		
Area B Deposited Plan 567585	Easement		
Area C Deposited Plan 567585	Easement		
Area D Deposited Plan 567585	Easement		
Area K Deposited Plan 567585	Easement		
Area L Deposited Plan 567585	Easement		
Area M Deposited Plan 567585	Easement		
Area P Deposited Plan 567585	Easement		
Area Q Deposited Plan 567585	Easement		
Area Z Deposited Plan 567585	Easement		
Area R Deposited Plan 567585	Easement		
Area S Deposited Plan 567585	Easement		
Area T Deposited Plan 567585	Easement		
Area U Deposited Plan 567585	Easement		
Total Area		<hr/> 15.3153 Ha	

Schedule / Memorandum

Land Registration District

North Auckland

Plan Number

DP 567585

Territorial Authority (the Council)

Waikato District Council – TA Reference: SUB0132/19.02

Memorandum of Easements in Gross (Pursuant to s243 Resource Management Act 1991)			
Purpose	Shown	Servient Tenement (Burdened Land)	Grantee
Right to Drain Sewage	A	Lot 1 hereon	Waikato District Council
	B	Lot 2 hereon	
	K	Lot 710 hereon	
	L	Lot 696 hereon	
	P	Lot 728 hereon	
	Q	Lot 744 hereon	
	R	Lot 734 hereon	
	S	Lot 735 hereon	
	T	Lot 740 hereon	
	U	Lot 741 hereon	
Z	Lot 729 hereon		

Schedule / Memorandum

Land Registration District

North Auckland

Plan Number

DP 567585

Territorial Authority (the Council)

Waikato District Council – TA Reference: SUB0132/19.02

Memorandum of Easements in Gross (Pursuant to s243 Resource Management Act 1991)			
Purpose	Shown	Servient Tenement (Burdened Land)	Grantee
Right to Drain Water	B	Lot 2 hereon	Waikato District Council
	C	Lot 3 hereon	
	D	Lot 4 hereon	
	K	Lot 710 hereon	
	M	Lot 697 hereon	
	R	Lot 734 hereon	
	S	Lot 735 hereon	
	T	Lot 740 hereon	
Right to Convey Water	U	Lot 741 hereon	Waikato District Council
	A	Lot 1 hereon	
	B	Lot 2 hereon	
	C	Lot 3 hereon	
	D	Lot 4 hereon	

Schedule / Memorandum

Land Registration District

North Auckland

Plan Number

DP 567585

Territorial Authority (the Council)

Waikato District Council – TA Reference: SUB0132/19.02

Schedule of Easements in Gross			
Purpose	Shown	Servient Tenement (Burdened Land)	Grantee
Right to Convey Telecommunications	A	Lot 1 hereon	Chorus NZ Ltd
	B	Lot 2 hereon	
	C	Lot 3 hereon	
	D	Lot 4 hereon	

Land Registration District

North Auckland

Plan Number

DP 567585

Territorial Authority (the Council)

Waikato District Council – TA Reference: SUB0132/19.02

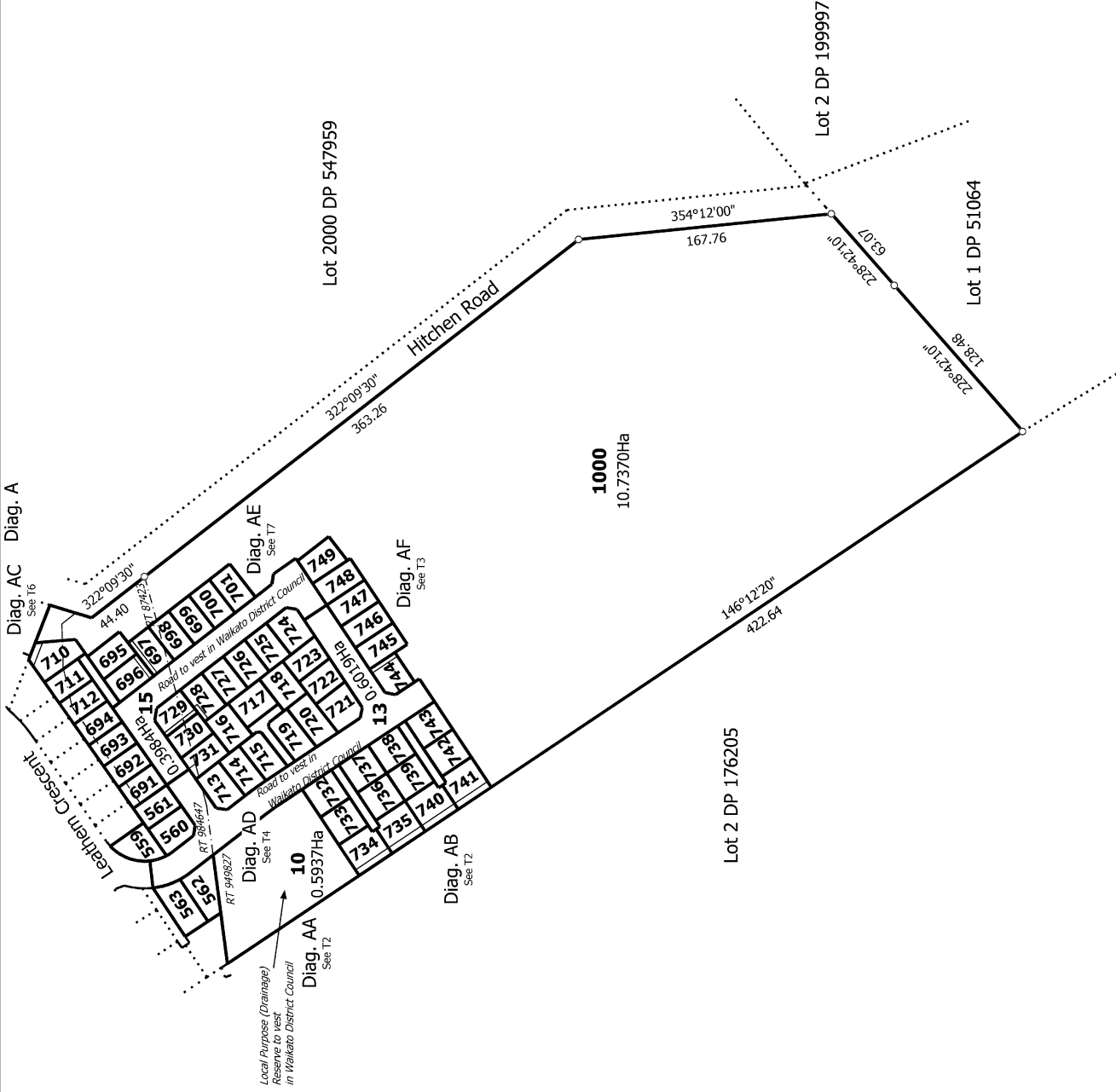
Amalgamation Condition:

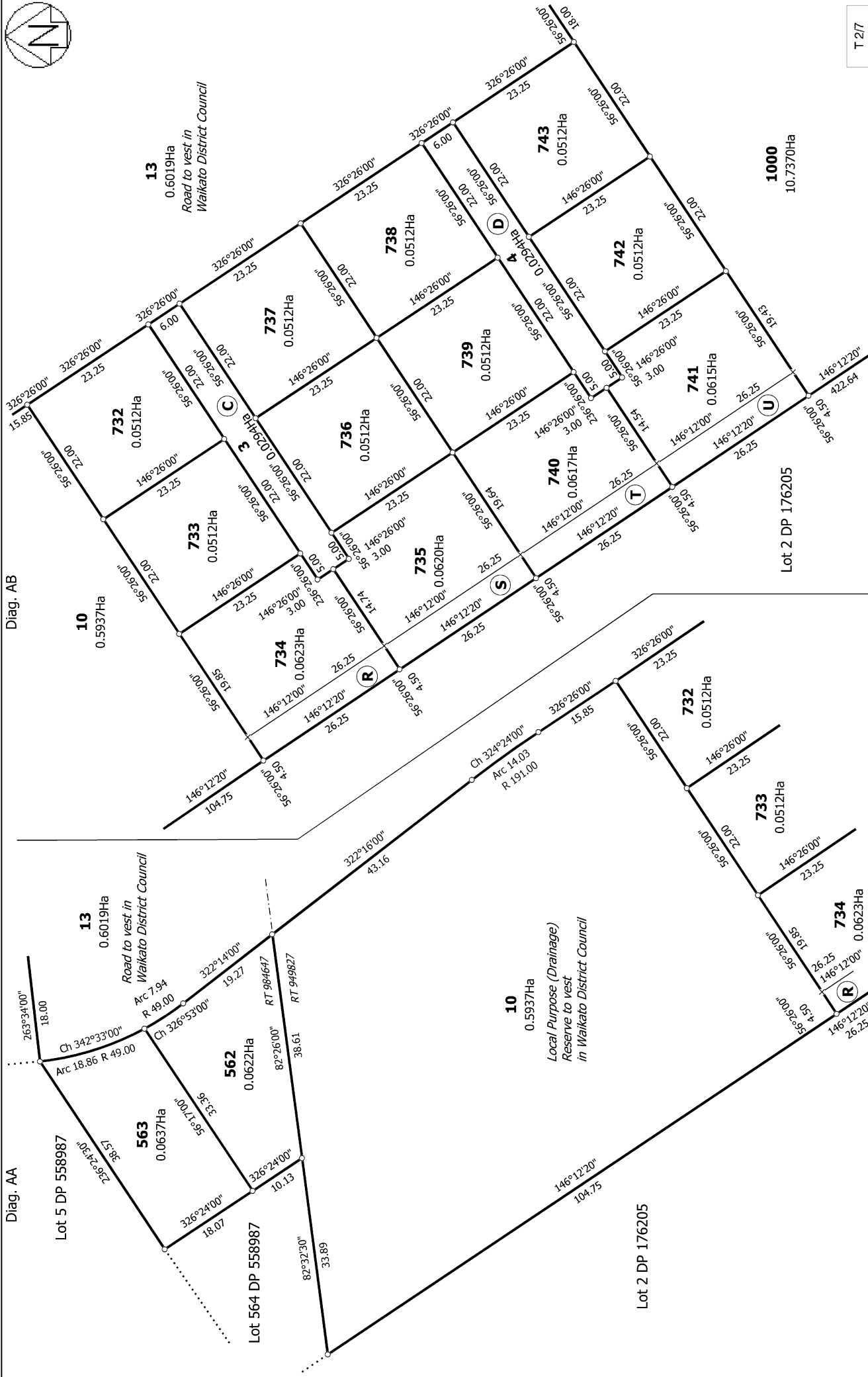
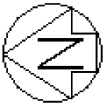
That Lot 1 hereon (legal access) be held as to four undivided one-fourth shares by the owners of Lots 695 and 710-712 hereon as tenants in common in the said shares and that individual records of title be issued in accordance therewith.

That Lot 2 hereon (legal access) be held as to three undivided one-third shares by the owners of Lots 716-718 hereon as tenants in common in the said shares and that individual records of title be issued in accordance therewith.

That Lot 3 hereon (legal access) be held as to four undivided one-fourth shares by the owners of Lots 733-736 hereon as tenants in common in the said shares and that individual records of title be issued in accordance therewith.

That Lot 4 hereon (legal access) be held as to four undivided one-fourth shares by the owners of Lots 739-742 hereon as tenants in common in the said shares and that individual records of title be issued in accordance therewith.





T 2/7

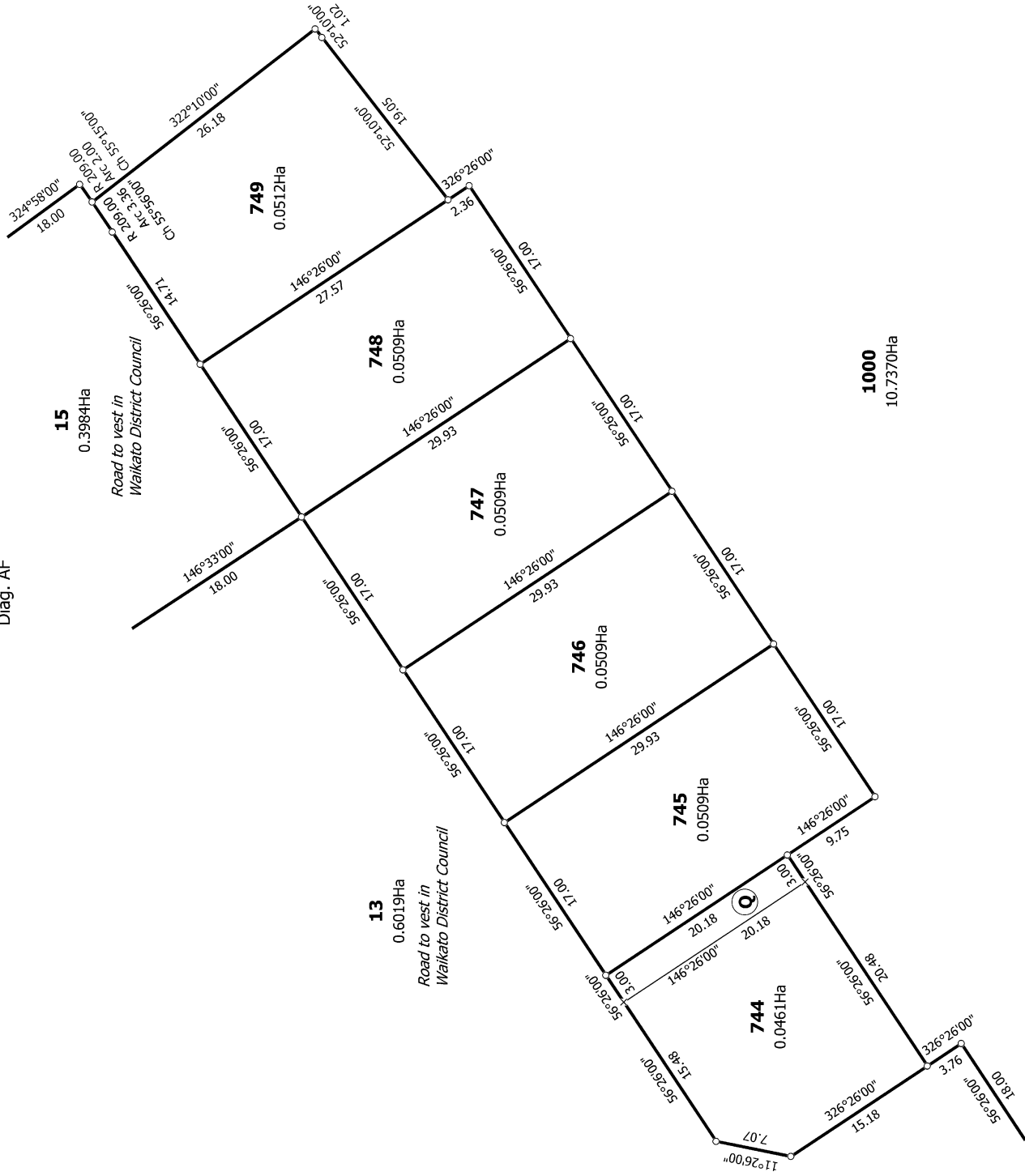
Title Plan
 LT 567585
 DRAFT

Surveyor: Campbell Lloyd Harvey
 Firm: Civilplan Consultants Limited

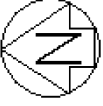
Lots 1-4, 10, 13, 15, 559-563, 691-701, 710-749 and 1000 being a Subdivision of Lot 1 DP 321866, Lot 1 DP 540985 and Lot 1016 DP 558987

Land District: North Auckland
Digitally Generated Plan
 Generated on: 24/09/2021 3:08pm Page 9 of 14

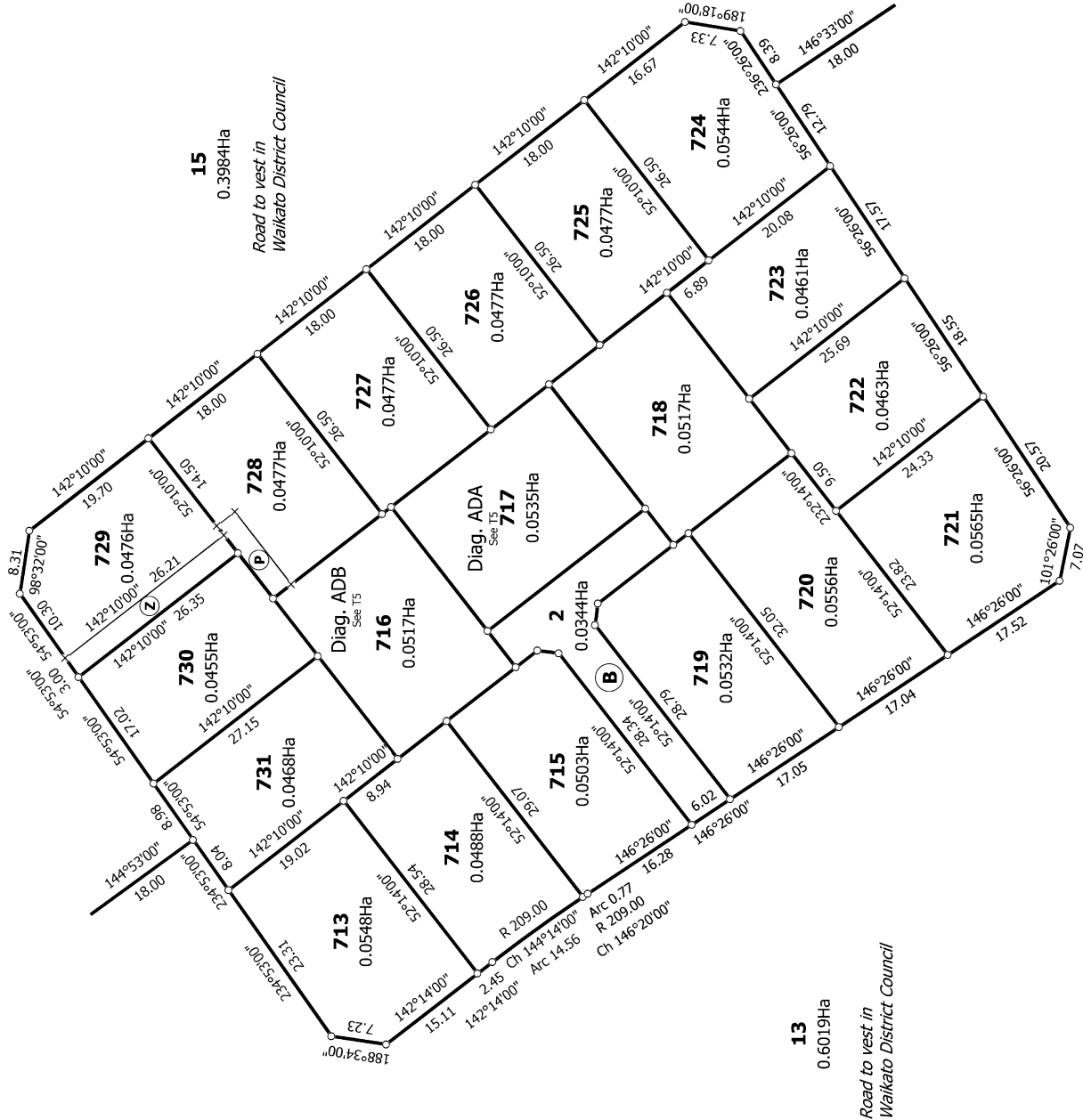
Diag. AF



T 3/7



Diag. AD



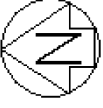
13
0.6019Ha

Road to west in
Waikato District Council

15
0.3984Ha

Road to west in
Waikato District Council

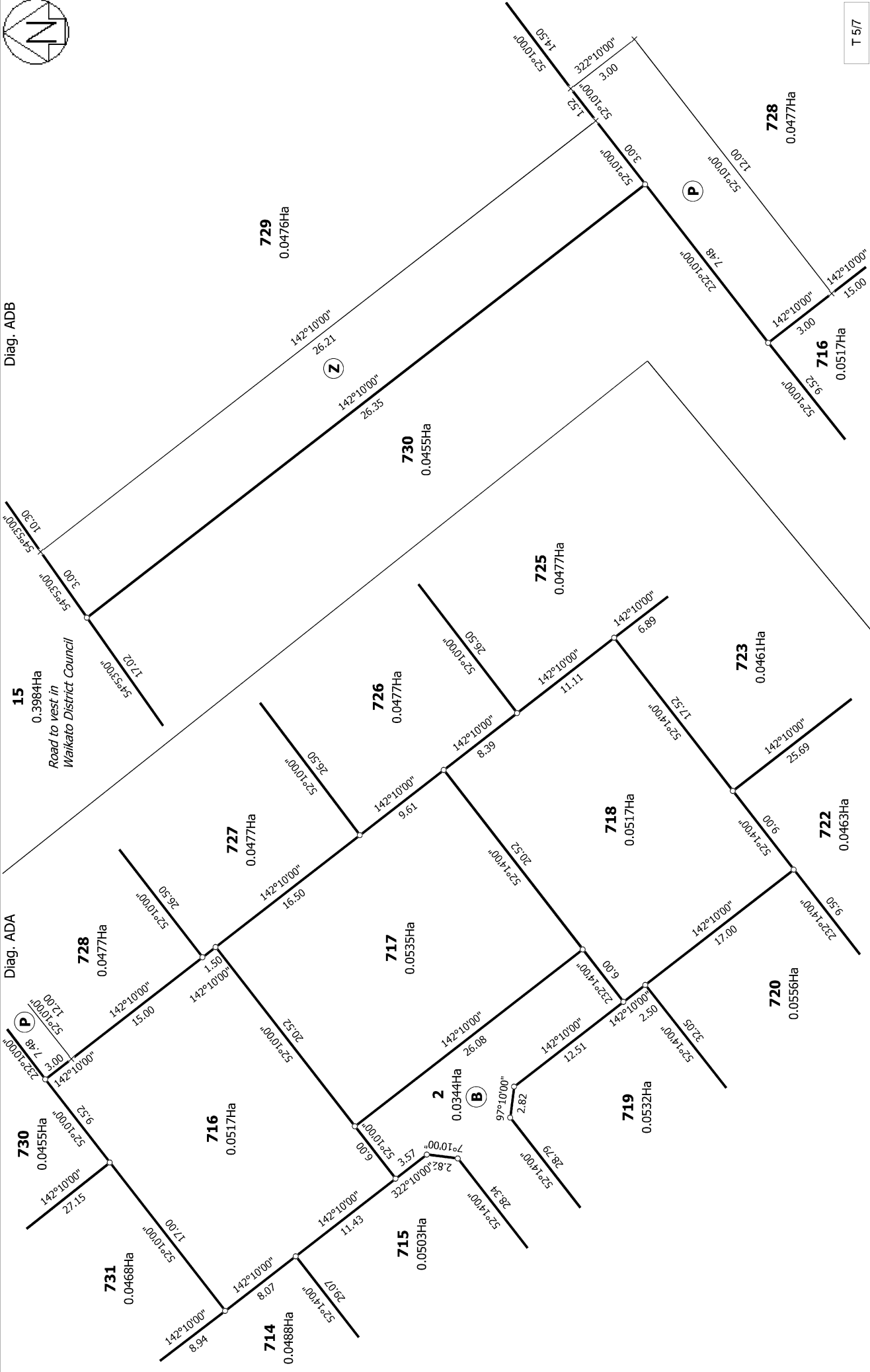
T 4/7



Diag. ADB

Diag. ADA

15
0.3984Ha
Road to vest in
Waikato District Council

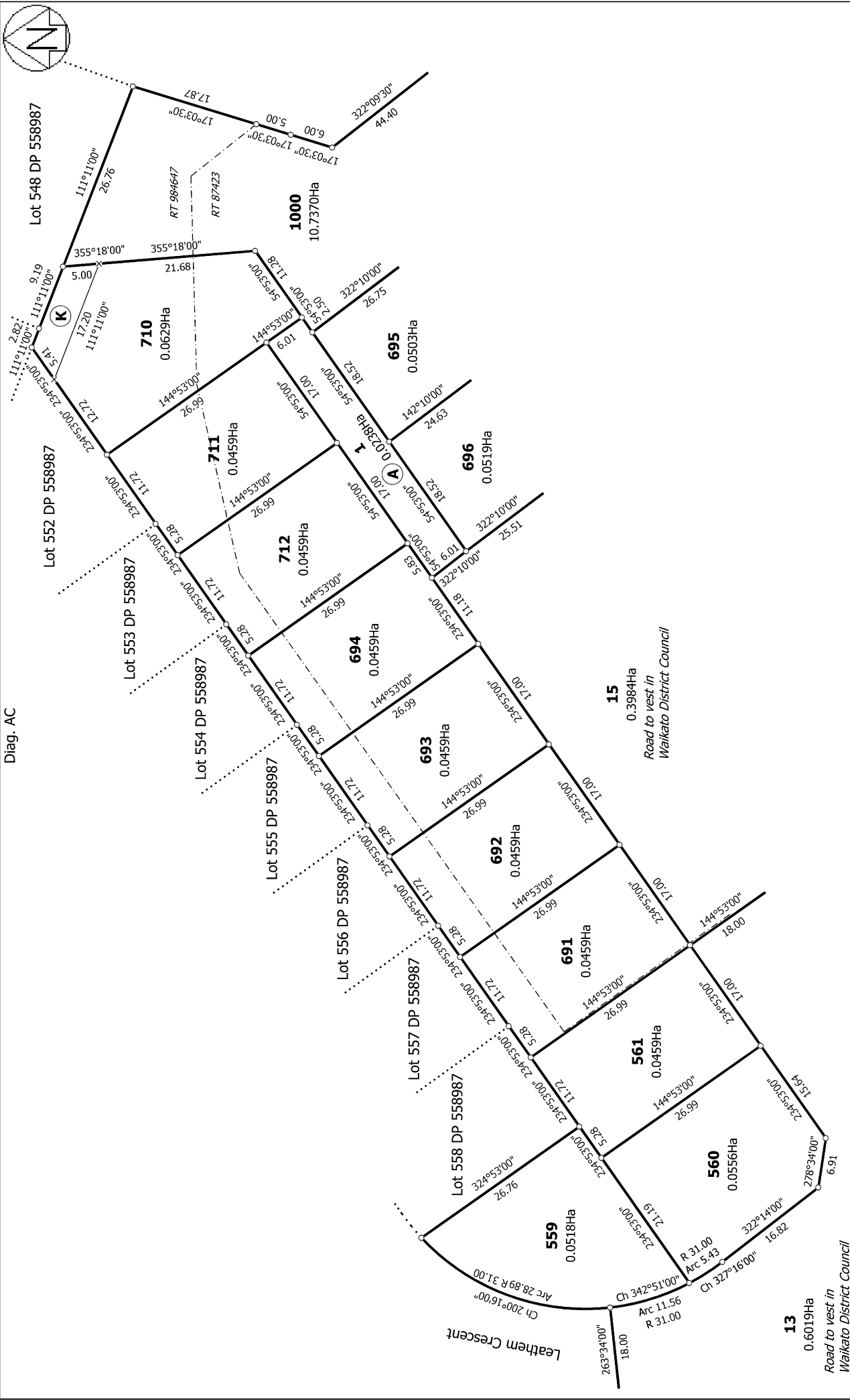


T 5/7

**Lots 1-4, 10, 13, 15, 559-563, 691-701, 710-749 and 1000 being a Subdivision of
Lot 1 DP 321866, Lot 1 DP 540985 and Lot 1016 DP 558987**

Surveyor: Campbell Lloyd Harvey
Firm: Civilplan Consultants Limited

**Title Plan
LT 567585
DRAFT**



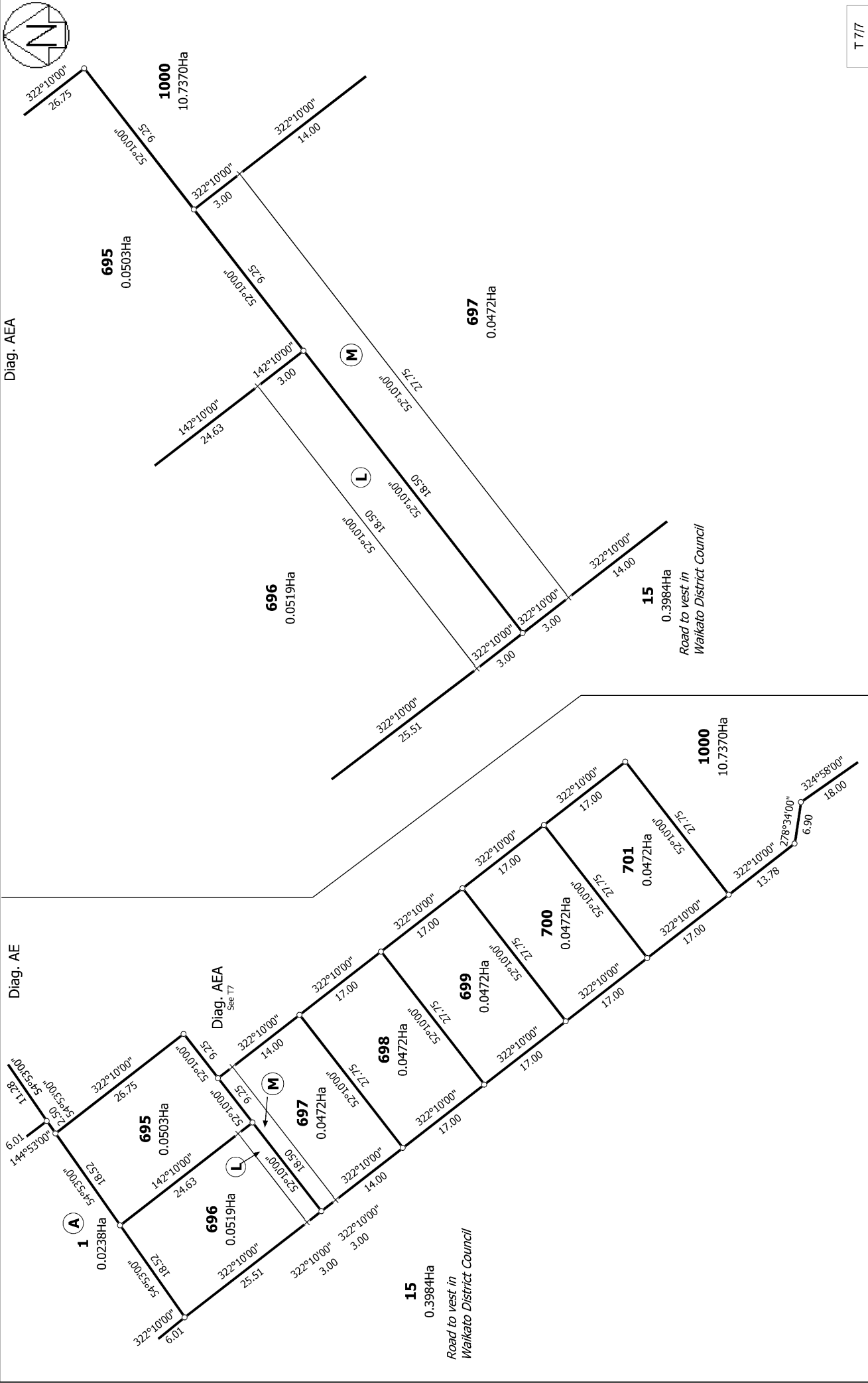
T 617

Land District: North Auckland
Digitally Generated Plan
 Generated on: 24/09/2021 3:08pm Page 13 of 14

Surveyor: Campbell Lloyd Harvey
 Firm: Civilplan Consultants Limited

Lots 1-4, 10, 13, 15, 559-563, 691-701, 710-749 and 1000 being a Subdivision of Lot 1 DP 321866, Lot 1 DP 540985 and Lot 1016 DP 558987

Title Plan
LT 567585
DRAFT



T 7/7

Land District: North Auckland
Digitally Generated Plan
 Generated on: 24/09/2021 3:08pm Page 14 of 14

Surveyor: Campbell Lloyd Harvey
 Firm: Civilplan Consultants Limited

Title Plan
 LT 567585
 DRAFT

Lots 1-4, 10, 13, 15, 559-563, 691-701, 710-749 and 1000 being a Subdivision of
 Lot 1 DP 321866, Lot 1 DP 540985 and Lot 1016 DP 558987